

once weekly
yurpeak[®]

KwikPen[®]
(tirzepatide) injection

A Lilly Medicine

**Multi-dose,
pre-filled**

KwikPen[®]

INSTRUCTIONS FOR USE



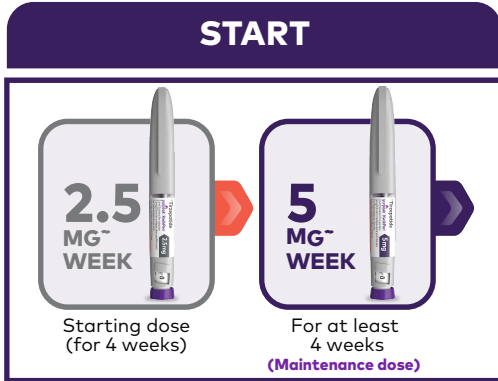
GETTING STARTED

WITH YOUR YURPEAK® KWIKPEN¹



Scan here or visit obesitypsp.com* in to watch a step-by-step injection demonstration video.

Multiple doses indicated by different colours



Note: Use Yurpeak once a week, at any time of day, with or without food. If your healthcare professional increases your dose, a new KwikPen for the different dose should be used. Do not change your dose or stop taking Yurpeak without talking to your doctor.

Gather the supplies you need to give your Yurpeak injection

- Yurpeak KwikPen
- KwikPen compatible needle (Not Provided with Tirzepatide KwikPen)
- 2 alcohol swabs
- Gauze or cotton ball
- Puncture-resistant container or household container

You will need to prime before injecting a dose. This long dash is the **prime position**. Priming removes air from the cartridge and makes sure that your KwikPen is working correctly. To get to the prime position, slowly turn the dose knob until you hear 2 clicks, and the extended line is shown in the dose window.

For each weekly injection, the **1** should be showing in the dose window.

1 = Full dose

To confirm if the injection is complete, the **0** must be shown in the dose window.



Needle Compatibility

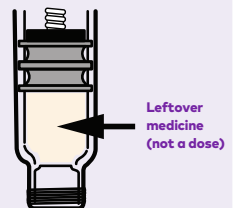
The Yurpeak® KwikPen is compatible with ISO 11608-2 compliant pen needles from brands such as, BD, Novo Nordisk, and Terumo, in any length and gauge combination:²

- **Lengths:** 4 mm, 5 mm, 6 mm, 8 mm, 12.7 mm
- **Gauges:** 29G, 31G, 32G, 33G, 34G²

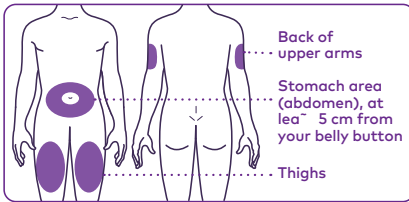
Patients should consult their healthcare provider for pen needle recommendations and guidance on proper injection technique.

Leftover Medicine after 4th Dose

- Each KwikPen contains **4 fixed weekly doses** and should be discarded 30 days after first use.
- After the fourth dose, some medication remains—**this is expected** and ensures proper function. The residual amount does not constitute an additional dose and should not be administered to the patient.



Where do I inject Yurpeak?



You can inject Yurpeak in your **stomach area** (abdomen), **thigh**, or in the **back of your upper arm**. If you choose the arm, someone else should give you the injection. **Change (rotate)** your injection site each week. You may use the same area of your body, but choose a different injection site within that area.

How do I use the Yurpeak KwikPen?

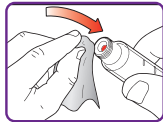
1. Get ready

- Wash your hands with soap and water.
- Inspect the KwikPen and label to see if the medication name and dose strength matches your prescription. Make sure the medicine in the KwikPen is not frozen, is free of particles and is not cloudy or discoloured. Also make sure that it is colourless to slightly yellow.



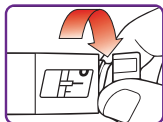
2. Prepare the KwikPen

- Wipe the red inner seal with an alcohol swab.
- Attach a new needle by twisting until it is tight. Always use a new pen needle for each injection.
- Pull off the outer needle shield and the inner needle shield. Do not throw the outer shield away—this will be reused.*



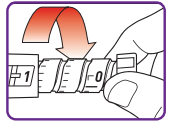
3. Get ready

- Slowly turn the dose knob until you hear **two clicks** and the extended line shown in the dose window aligns with the dose indicator. This is the prime position.
- Hold the KwikPen with the needle pointing up and tap to collect air bubbles.
- Release some medicine into the air by **pushing and holding** the dose knob in until it stops and the **0** is shown in the dose window. Keep holding and count to 5. Do not inject into your body.
- Your pen has been primed if a **small amount** of medicine comes out the tip of the pen needle.
- If you don't see any medicine, repeat this step no more than two additional times. If you still don't see any medicine, change the needle and repeat this step no more than one additional time. If you still do not see medicine, contact us at 8259001000.



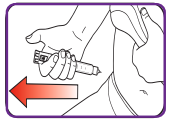
4. Dial to **1** for one full dose

- Turn the dose knob until it stops and the **1** is shown in the dose window. This is a full dose.



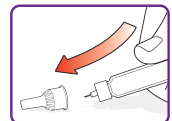
5. Inject Yurpeak

- Insert the needle into your skin and slowly push the dose knob in until it stops.
- Hold the dose knob in and slowly count to 5. The **0** must be in the dose window before removing the needle.
- Pull the needle out.* Confirm that the **0** is in the dose window.
- If you do not see the **0**, insert the needle back into your skin and finish the injection. Do not turn the dose knob back to the **1**. If you think you may not have received the full dose after the injection with your KwikPen, do not start over or repeat the injection. Contact us at 8259001000 for assistance.



6. After your injection

- Carefully replace the outer needle shield.
- Unscrew the capped needle and dispose of it in a sharps container.
- Replace the Kwikpen cap. Do not store without the cap attached.



QUESTIONS?

If you have any questions about injecting Yurpeak KwikPen or problems with your Yurpeak KwikPen, contact your healthcare provider or at 8259001000. Scan the QR code for more information or refer to the Prescribing Information & Instructions For Use.



Scan here

Tips for managing possible side effects^{2,3}

Yurpeak can cause side effects, although everyone can have a different experience. If you experience side effects that are gastrointestinal in nature (e.g., nausea, diarrhea), talk to your doctor. The following tips may help you manage them:



Eat smaller meals



Eat slowly



Eat bland foods
(e.g., toast, rice)



Avoid fatty or sweet foods



Drink more water

* Ensure the needle does not touch any other surfaces.

* If you see blood after you remove the needle, press the injection site with a piece of gauze or an alcohol swab. Do not rub the area.

References: 1. Yurpeak® (tirzepatide), India Prescribing Information. Updated March 2025 2. Vazquez LA et al Diabetes Ther (2024) 15:1501–1512; 3. SURMOUNT-1 Protocol I8F-MC-GPHK(b)

The information provided in this material is intended solely for the use of registered medical practitioner. This material is being provided to healthcare professionals for their guidance and use. Nothing on this material should be construed as giving medical advice or making recommendations regarding any health-related decision or action. This material can be used by the Healthcare professional who shall exercise his/her own independent judgement and discretion to disseminate the material to their patients who have been prescribed Yurpeak(tirzepatide). This material has been developed by Cipla under the distribution and promotion license agreement with Eli Lilly. Cipla and Eli Lilly will not be liable for any outcomes due to the inaccurate use of the information provided under this material. Without limitation, the information provided should not replace medical advice received from a healthcare provider or treating doctor. To be sold by retail under prescription of Endocrinologist or Internal Medicine Specialists only. This material (including any link) is intended solely for the use of the recipient(s) and may contain confidential information. Any unauthorized review, use, disclosure, copying, or distribution is strictly prohibited. If you are not the intended recipient, please notify the sender immediately and destroy all copies of the material. Yurpeak® is a registered trademark owned by Eli Lilly. Promoted and Distributed by Cipla Limited in India. To be sold by retail under prescription of Endocrinologist or Internal Medicine Specialists only. For any further information, please contact : Cipla Ltd., Cipla House, Peninsula Business Park, Ganpatrao Kadam Marg, Lower Parel, Mumbai-400013, India | www.cipla.com

For Tirzepatide Prescribing Information, please scan QR code. Additional information is available on request.



once weekly 
yurpeak[®]

KwikPen[®]
(tirzepatide) injection

A Lilly Medicine

Yurpeak[®] (tirzepatide), India Prescribing Information. Updated March 2025.

The information provided in this material is intended solely for the use of registered medical practitioner. This material is being provided to healthcare professionals for their guidance and use. Nothing on this material should be construed as giving medical advice or making recommendations regarding any health-related decision or action. This material can be used by the Healthcare professional who shall exercise his/her own independent judgement and discretion to disseminate the material to their patients who have been prescribed Yurpeak(tirzepatide). This material has been developed by Cipla under the distribution and promotion license agreement with Eli Lilly. Cipla and Eli Lilly will not be liable for any outcomes due to the inaccurate use of the information provided under this material. Without limitation, the information provided should not replace medical advice received from a healthcare provider or treating doctor. To be sold by retail under prescription of Endocrinologist or Internal Medicine Specialists only. This material (including any link) is intended solely for the use of the recipient(s) and may contain confidential information. Any unauthorized review, use, disclosure, copying, or distribution is strictly prohibited. If you are not the intended recipient, please notify the sender immediately and destroy all copies of the material. Yurpeak[®] is a registered trademark owned by Eli Lilly. Promoted and Distributed by Cipla Limited in India. To be sold by retail under prescription of Endocrinologist or Internal Medicine Specialists only. For any further information, please contact : Cipla Ltd., Cipla House, Peninsula Business Park, Ganpatrao Kadam Marg, Lower Parel, Mumbai-400013, India | www.cipla.com

For Tirzepatide Prescribing Information, please scan QR code. Additional information is available on request.

